

ORDINANCE TO SET TAX RATE

Date: August 17, 2020

On this date, we, the Board of Trustees of the Elgin Independent School District, hereby levy or set the tax rate on \$100 valuation for the District for the tax year 2020 at a total tax rate of \$1.4607, to be assessed and collected by the duly specified assessor and collector as follows:

\$1.0125 for the purpose of maintenance and operation, and

\$.4482 for the purpose of payment of principal and interest on debts.

\$1.3209 No New Revenue Rate

\$1.4607 Voter Approval Tax Rate

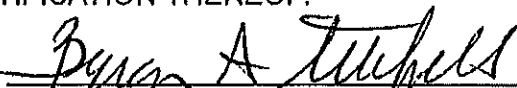
THIS TAX RATE WILL RAISE MORE TAXES FOR MAINTENANCE AND OPERATIONS THAN LAST YEAR'S TAX RATE.

Such taxes are to be assessed and collected by the tax officials designated by the District.


REVISION TO ORDINANCE APPROVED this the 17th day of August 2020.

IN CERTIFICATION THEREOF:

Signed:


Board President

Attest:


Board Secretary

2020 Tax Rate Calculation Worksheet

School Districts

Date: 08/05/2020 04:51 PM

2020 Elgin ISD

512-281-3434

School District's Name

Phone (area code and number)

1002 N. Avenue C, Elgin, TX, 78621

elginisd.net

School District's Address, City, State, ZIP Code

School District's Website Address

GENERAL INFORMATION: Tax Code Section 26.04(c) requires an officer or employee designated by the governing body to calculate the no-new-revenue tax rate and voter-approval tax rate for the taxing unit.

This worksheet is for school districts only. Water districts as defined under Water Code Section 49.001(1) should use Comptroller Form 50-858 Water District Rollback Tax Rate Worksheet. All other taxing units should use Comptroller Form 50-856 Tax Rate Calculation, Taxing Units Other Than School Districts.

This worksheet is provided to assist taxing units in determining tax rates. The information provided in this worksheet is offered as technical assistance and not legal advice. Taxing units should consult legal counsel for interpretations of law regarding tax rate preparation and adoption.

Line	No-New-Revenue Tax Rate Activity	Amount/Rate
1.	2019 total taxable value. Enter the amount of 2019 taxable value on the 2019 tax roll today. Include any adjustments since last year's certification; exclude one-fourth and one-third over-appraisal corrections made under Tax Code Section 25.25(d) from these adjustments. Exclude any property value subject to an appeal under Chapter 42 as of July 25 (will add undisputed value in Line 6). This total includes the taxable value of homesteads with tax ceilings (will deduct in Line 2). ¹	\$1,489,005,023
2.	2019 tax ceilings. Enter 2019 total taxable value of homesteads with tax ceilings. These include the homesteads of homeowners age 65 or older or disabled. ²	\$228,087,329
3.	Preliminary 2019 adopted taxable value. Subtract Line 2 from Line 1.	\$1,260,917,694
4.	2019 total adopted tax rate	\$1.518300
5.	2019 taxable value lost because court appeals of ARB decisions reduced 2019 appraised value.	
	A. Original 2019 ARB values:	\$0
	B. 2019 values resulting from final court decisions:	\$0
	C. 2019 value loss. Subtract B from A. ³	\$0
6.	2019 taxable value subject to an appeal under Chapter 42, as of July 25.	
	A. 2019 ARB certified value	0
	B. 2019 disputed value:	0
	C. 2019 undisputed value Subtract B from A. ⁴	0
7.	2019 Chapter 42-related adjusted values. Add Line 5 and 6.	0
8.	2019 taxable value, adjusted for actual and potential court-ordered adjustments. Add Line 3 and Line 7	\$1,260,917,694
9.	2019 taxable value of property in territory the school deannexed after Jan. 1, 2019. Enter the 2019 value of property in deannexed territory. ⁵	\$0
10.	2019 taxable value lost because property first qualified for an exemption in 2020. If the school district increased an original exemption, use the difference between the original exempted amount and the increased exempted amount. Do not include value lost due to freeport or goods-in-transit, temporary disaster exemptions. Note that lowering the amount or percentage of an existing exemption in 2020 does not create a new exemption or reduce taxable value.	
	A. Absolute exemptions. Use 2019 market value:	\$4,614,091
	B. Partial exemptions. 2020 exemption amount or 2020 percentage exemption times 2019 value:	\$9,051,588
	C. Value loss. Add A and B. ⁶	\$13,665,679
11.	2019 taxable value lost because property first qualified for agricultural	

	appraisal (1-d or 1-d-1), timber appraisal, recreational/scenic appraisal or public access airport special appraisal in 2020. Use only properties that qualified in 2020 for the first time; do not use properties that qualified in 2019.		
	A. 2019 market value:	\$856,656	
	B. 2020 productivity or special appraised value:	\$34,694	
	C. Value loss. Subtract B from A.⁷		\$821,962
12.	Total adjustments for lost value. Add Lines 9, 10C and 11C.		\$14,487,641
13.	2019 adjusted taxable value. Subtract Line 12 from Line 8.		\$1,246,430,053
14.	Adjusted 2019 taxes. Multiply Line 4 by Line 13 and divide by \$100.		\$18,924,547
15.	Taxes refunded for years preceding tax year 2019. Enter the amount of taxes refunded by the district for tax years preceding tax year 2019. Types of refunds include court decisions, Tax Code Section 25.25(b) and (c) corrections and Tax Code Section 31.11 payment errors. Do not include refunds for tax year 2019. This line applies only to tax years preceding tax year 2019.⁸		\$62,979
16.	Adjusted 2019 levy with refunds Add Lines 14 and 15.⁹ Note: If the governing body of the school district governs a junior college district in a county with a population of more than two million, subtract the amount of taxes the governing body dedicated to the junior college district in 2019 from the result.		\$18,987,526
17.	Total 2020 taxable value on the 2020 certified appraisal roll today. This value includes only certified values and includes the total taxable value of homesteads with tax ceilings (will deduct in Line 19). These homesteads include homeowners age 65 or older or disabled.¹⁰		
	A. Certified values only.¹¹	\$1,623,522,183	
	B. Pollution control and energy storage exemption: Deduct the value of property exempted for the current tax year for the first time as pollution control or energy storage system property:	\$0	
	C. Total value. Subtract B from A.		\$1,623,522,183
18.	Total value of properties under protest or not included on certified appraisal roll.¹²		
	A. 2020 taxable value of properties under protest. The chief appraiser certifies a list of properties still under ARB protest. The list shows the appraisal district's value and the taxpayer's claimed value, if any, or an estimate of the value if the taxpayer wins. For each of the properties under protest, use the lowest of these values. Enter the total value under protest.¹³	\$93,672,904	
	B. 2020 value of properties not under protest or included on certified appraisal roll. The chief appraiser gives school districts a list of those taxable properties that the chief appraiser knows about but are not included in the appraisal roll certification. These properties are also not on the list of properties that are still under protest. On this list of properties, the chief appraiser includes the market value, appraised value and exemptions for the preceding year and a reasonable estimate of the market value, appraised value and exemptions for the current year. Use the lower market, appraised or taxable value (as appropriate). Enter the total value not on the roll.¹⁴	\$0	
	C. Total value under protest or not certified: Add A and B.		\$93,672,904
19.	2020 tax ceilings Enter 2020 total taxable value of homesteads with tax ceilings. These include the homesteads of homeowners age 65 or older or disabled.¹⁵		\$236,705,852
20.	2020 total taxable value. Add Lines 17C and 18C. Subtract Line 19.		\$1,480,489,235
21.	Total 2020 taxable value of properties in territory annexed after Jan. 1, 2019. Include both real and personal property. Enter the 2020 value of property in territory annexed by the school district.		\$0
22.	Total 2020 taxable value of new improvements and new personal property located in new improvements. New means the item was not on the appraisal roll in 2019. An improvement is a building, structure, fixture or fence erected on or affixed to land. New additions to existing improvements may be included if the appraised value can be determined. New personal property in a new improvement must have been brought into the school district after Jan. 1, 2019, and be located in		\$43,044,700

	a new improvement.		
23.	Total adjustments to the 2020 taxable value. Add Lines 21 and 22.		\$43,044,700
24.	Adjusted 2020 taxable value. Subtract Line 23 from Line 20.		\$1,437,444,535
25.	2020 NNR tax rate. Divide Line 16 by Line 24 and multiply by \$100.		\$1.320900 /\$100

[1]Tex. Tax Code Section

[2]Tex. Tax Code Section

[3]Tex. Tax Code Section

[4]Tex. Tax Code Section

[5]Tex. Tax Code Section

[6]Tex. Tax Code Section

[7]Tex. Tax Code Section

[8]Tex. Tax Code Section

[9]Tex. Tax Code Section

[10]Tex. Tax Code Section

[11]Tex. Tax Code Section

[12]Tex. Tax Code Section

[13]Tex. Tax Code Section

[14]Tex. Tax Code Section

[15]Tex. Tax Code Section

Line	Voter Approval Tax Rate Activity		Amount/Rate
26.	2020 maximum compressed tax rate (MCR). TEA will publish compression rates based on district and statewide property value growth. Enter the school district's maximum compressed rate based on guidance from the TEA. [25]		\$,874200
27.	2020 enrichment tax rate (DTR). Enter the greater of A and B. [26]		\$,138300
	A. Enter the District's 2019 DTR, minus any required reduction under Education Code Section 48.202(f)	\$,138300	
	B. Enter \$.05 per \$100 of taxable value, if governing body of school district adopts \$.05 by unanimous vote. If not adopted by unanimous vote, enter \$.04 per \$100 [27]	\$,000000	
28.	2020 maintenance and operations (M&O) tax rate (TR). Add Lines 26 and 27. Note: M&O tax rate may not exceed the sum of \$.17 and the product of the state compression percentage multiplied by \$1.00. [28]		\$1,012500
29.	Total 2020 debt to be paid with property tax revenue.		
	Debt means the interest and principal that will be paid on the debts that: (1) Are paid by property taxes; (2) Are secured by property taxes; (3) Are scheduled for payment over a period longer than one year; and (4) Are not classified in the school district's budget and M&O expenses.		
	A. Debt includes contractual payments to the other school districts that have incurred debt on behalf of this school district, if those debts meet the four conditions above. Include only amounts that will be paid from property tax revenue. Do not include appraisal district budget payments. Enter debt amount:	7,132,825	
	B. Subtract unencumbered fund amount used to reduce total debt.	0	
	C. Subtract state aid received for paying principal and interest on debt for facilities through the existing debt allotment program and/or instructional facilities allotment program.	159,923	
	D. Adjust debt: Subtract B from C and from A.		6,972,902
30.	Certified 2019 excess debt collections. Enter the amount certified by the collector.		270,918
31.	Adjusted 2020 debt. Subtract line 30 from line 29D. [29]		6,701,984
32.	2020 anticipated collection rate. If the anticipated rate in A is lower than actual rates in B, C and D, enter the lowest rate from B, C or D. If the anticipated rate in A is higher than at least one of the rates in the prior three years, enter the rate from A. Note that the rate can be greater than 100%. [30]		101.00 %
	A. Enter the 2020 anticipated collection rate certified by the collector. [31]	101.00 %	
	B. Enter the 2019 actual collection rate	101.00 %	
	C. Enter the 2018 actual collection rate	101.00 %	
	D. Enter the 2017 actual collection rate	101.00 %	
33.	2020 debt adjusted for collections. Divide Line 31 by Line 32. Note: If the governing body of the school district governs a junior college district in a county with a population of more than two million, add the amount of taxes the governing body proposes to dedicate to the junior college district in 2020 to the result.		6,635,628
34.	2020 total taxable value Enter the amount on Line 20 of the No-New-Revenue Tax Rate Worksheet.		1,480,489,235
35.	2020 debt rate. Divide Line 33 by Line 34 and multiply by \$100		0.4482
36.	2020 voter-approval tax rate. Add Lines 28 and 36. If the school district received distributions from an equalization tax imposed under former Chapter 18, Education code, add the NNR tax rate as of the date of the county unit system's abolition to the sum of Lines 28 and 36 [32]		1.4607

STEP 3: Additional Rollback Protection for Pollution Control

A school district may raise its rate for M&O funds used to pay for a facility, device or method for the control of air, water or land pollution. This includes any land, structure, building, installation, excavation, machinery, equipment or device that is used, constructed, acquired or installed wholly or partly to meet or exceed pollution control requirements. The school district's expenses are those necessary to meet the requirements of a permit issued by the Texas Commission on Environmental Quality (TCEQ). The school district must provide the tax assessor with a copy of the TCEQ letter of determination that states the portion of the cost of the installation for pollution control. This step should only be completed by a school district that uses M&O funds to pay for a facility, device or method for the control of air, water or land pollution."

Line	Activity	Amount/Rate
37.	Certified expenses from the Texas Commission on Environmental Quality (TCEQ).[6] Enter the amount certified in the determination letter from TCEQ. The school district shall provide its tax assessor collector with a copy of the letter.[7]	\$0
38.	2020 total taxable value. Enter the amount on Line 20 of the No-New-Revenue Tax Rate Worksheet.	\$1,480,489.235
39.	Additional rate for pollution control. Divide Line 37 by Line 38 and multiply by \$100.	\$0.000000
40.	2020 voter-approval tax rate, adjusted for pollution control. Add line 36 and line 39.	\$1.460700

STEP 4: Total Tax Rate

Indicate the applicable total tax rates as calculated above,

No-new-revenue tax rate (Line 24)	\$1.320900
Voter-Approval Tax Rate (Line 40)	\$1.460700

STEP 5: School District Representative Name and Signature

Enter the name of the person preparing the tax rate as authorized by the school board.

print here Debra George
Printed Name of Taxing Unit Representative

sign here Debra George
Taxing Unit Representative

8/3/2020
Date

BOARD OF TRUSTEES



Superintendent
Dr. Jodi Duron
PO Box 351
1002 N. Avenue C
Elgin, TX 78621
jodi.duron@elginisd.net



President
Byron Mitchell
PO Box 351
1002 N. Avenue C
Elgin, TX 78621
byron.mitchell@elginisd.net

Term 2023, District 1



Vice-President
Beth Walterscheidt
PO Box 351
1002 N. Avenue C
Elgin, TX 78621
beth.walterscheidt@elginisd.net

Term 2021, District 3



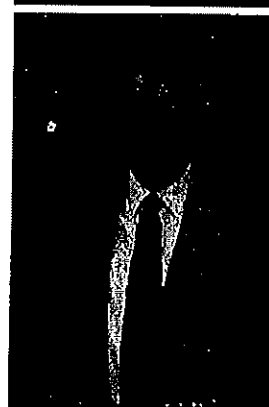
Parliamentarian
Angie Edmon
PO Box 351
1002 N. Avenue C
Elgin, TX 78621
angie.edmon@elginisd.net

Term 2022, District 4



Secretary
Juanita Valarie Neidig
PO Box 351
1002 N. Avenue C
Elgin, TX 78621
valarie.neidig@elginisd.net

Term 2021, District 6



Member
Pete Bega
PO Box 351
1002 N. Avenue C
Elgin, TX 78621
pete.bega@elginisd.net

Term 2023, District 2

Member
JD Harklins
PO Box 351
1002 N. Avenue C
Elgin, TX 78621
jd.harklins@elginisd.net

Term 2022, District 5

Member
David Glass
PO Box 351
1002 N. Avenue C
Elgin, TX 78621
david.glass@elginisd.net

Term 2022, District 7